

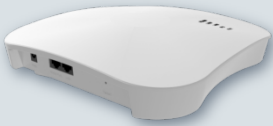


# AC-1027-I INDOOR ACCESS POINT

IEEE 802.11a/b/g/n/ac 2.4G 2X2 and 5G 3X3 dual band concurrent Indoor AP



With optimized performance, functionality and reliability, AC-1027-I sets the new standard for enterprise wireless technology to help ensure a high speed, and the best possible end-user experience on the wireless network. Performing as a stand-alone access point, AC-1027-I can be centrally managed by Controllers for large installations.



- **Multiple Management Choices**  
Manage AC-1027-I from zCloud or with physical/virtual appliances
- **Simplified power supply**  
PoE output support powering other devices without external power supply
- **Advanced Security**  
Support WPA-PSK/WPA2-PSK with 802.1X Authentication
- **Flexible Deployment Mode**  
Allows not only traditional AP also in mesh networks. All deployment modes are easy to set up and configure



# AC-1027-I INDOOR ACCESS POINT

IEEE 802.11a/b/g/n/ac 2.4G 2X2 and 5G 3X3 dual band concurrent Indoor AP

WIRELESS		PHYSICAL	
STANDARDS	<ul style="list-style-type: none"><li>• IEEE 802.11an/ac (5G)</li><li>• IEEE 802.11b/g/n (2.4G)</li></ul>	ETHERNET PORTS	<ul style="list-style-type: none"><li>• 2 auto MDX, auto-sensing 10/100/1000 Mbps, RJ-45, POE port (on one port)</li></ul>
RADIO CHAINS	<ul style="list-style-type: none"><li>• 2x2 with two spatial streams (2.4G)</li><li>• 3x3 with one spatial streams (5G)</li></ul>	OTHER INTERFACES	<ul style="list-style-type: none"><li>• 1 Reset button</li><li>• 1 Power Jack</li></ul>
MIMO	<ul style="list-style-type: none"><li>• MU-MIMO Up to 2 streams (2.4G)</li><li>• MU-MIMO Up to 3 streams (5G)</li></ul>	POWER	<ul style="list-style-type: none"><li>• Power over Ethernet 802.3at</li></ul>
SUPPORTED DATA RATES	<ul style="list-style-type: none"><li>• 802.11b: 1, 2, 5.5, 11 Mbps</li><li>• 802.11a/g: 6, 9, 12, 18, 24, 36, 48, 54 Mbps</li><li>• 802.11n: Up to 300Mbps (40MHz)</li><li>• 802.11ac: up to 1300Mbps (80MHz)</li></ul>	POWER DRAW	<ul style="list-style-type: none"><li>• &lt; 25.5W</li></ul>
BANDWIDTH	<ul style="list-style-type: none"><li>• 802.11n high-throughput (HT) support: HT 20/40</li><li>• 802.11ac very high throughput (VHT) support: VHT 20/40/80</li></ul>	LEDs	<ul style="list-style-type: none"><li>• Power/System</li><li>• WLAN1/WLAN2</li><li>• WAN1/LAN2</li></ul>
FREQUENCY BANDS	<ul style="list-style-type: none"><li>• 2,4 GHz: CH1 (2412 MHz), CH2 (2417 MHz), CH3 (2422 MHz), CH4 (2427MHz), CH5 (2432MHz), CH6 (2437MHz), CH7(2442MHz), CH8 (2447MHz), CH9 (2452MHz), CH10 (2457MHz), CH11 (2462MHz), CH12 (2467MHz), CH13 (2472MHz)</li><li>• 5 GHz: CH36 (5180MHz), CH40 (5200MHz), CH44 (5220MHz), CH48 (5240MHz), CH52 (5260MHz), CH56 (5280MHz), CH60 (5300MHz), CH64 (5320MHz)</li></ul>	MOUNTING	<ul style="list-style-type: none"><li>• Ceiling</li><li>• Wall</li></ul>
OPERATING CHANNELS	<ul style="list-style-type: none"><li>• 2.4GHz – 1-13</li><li>• 5GHz – 36, 40, 44, 48, 52, 56, 60, 64</li></ul>	<b>MECHANICAL</b>	
RF OUTPUT POWER	<ul style="list-style-type: none"><li>• 2.4GHz – 17dBm (2TX)</li><li>• 5GHz – 18dBm (3TX)</li></ul> <p>Note: The maximum power setting will vary by channel and according to individual country regulations.</p>	DIMENTION	<ul style="list-style-type: none"><li>• 216 (L) mm x 216 (D) mm x 43 (H) mm</li></ul>
RECEIVE SENSITIVITY	<ul style="list-style-type: none"><li>• IEEE 802.11b/g/n: 11g: -89dBm@ 6Mbps 11a: -92dBm@ 6Mbps 11n: -85dBm @ HT20 -82dBm @ HT40</li><li>• 802.11ac: -90dBm @ VHT20 -87dBm @ VHT40 -84dBm @ VHT80</li></ul>	WEIGHT	<ul style="list-style-type: none"><li>• 1kg</li></ul>
		<b>ENVIRONMENTAL</b>	
		OPERATING	<ul style="list-style-type: none"><li>• Temperature: 0 ~44 °C</li><li>• Humidity: 15 ~ 95% non-condensing</li></ul>
		STORAGE	<ul style="list-style-type: none"><li>• Temperature: -10~60 °C</li><li>• Humidity: 15 ~ 95%</li></ul>
		<b>SECURITY</b>	
		SECURITY	<ul style="list-style-type: none"><li>• 802.11i, WPA, WPA2</li><li>• 802.1X</li><li>• WEP, WPA-TKIP, WPA2-AES</li><li>• Hotspot 2.0</li></ul>
		<b>MANAGEMENT</b>	
		OPERATING MODES	<ul style="list-style-type: none"><li>• Controller-managed mode (TAP)</li><li>• Standalone AP mode (FAP)</li></ul>
		ACCESS METHOD	<ul style="list-style-type: none"><li>• Web User Interface</li><li>• Telnet, SSH, SNMP</li></ul>
		<b>ANTENNA</b>	
		ANTENNA	<ul style="list-style-type: none"><li>• 2.4G: 2 built-in 5dBi antennas</li><li>• 5G: 3 built-in 5dBi antennas</li></ul>